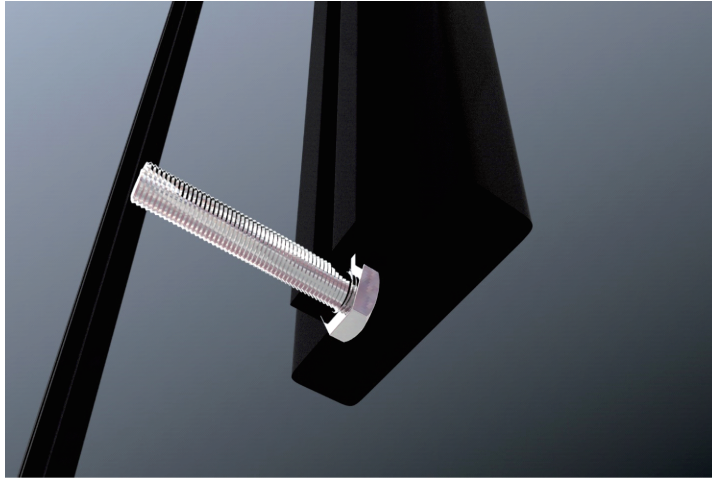


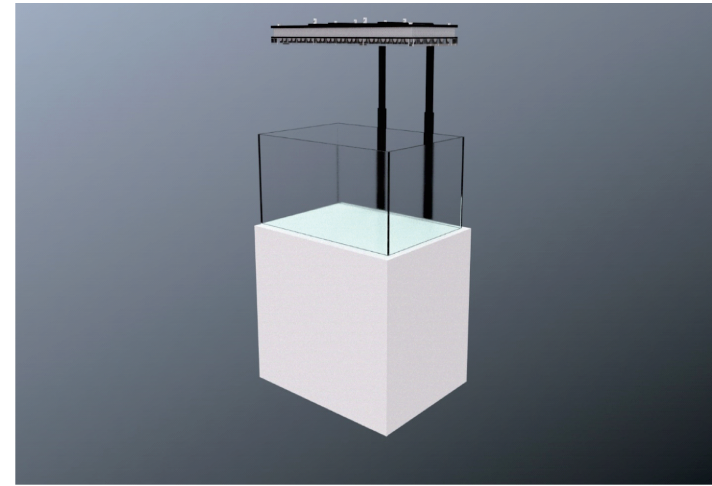
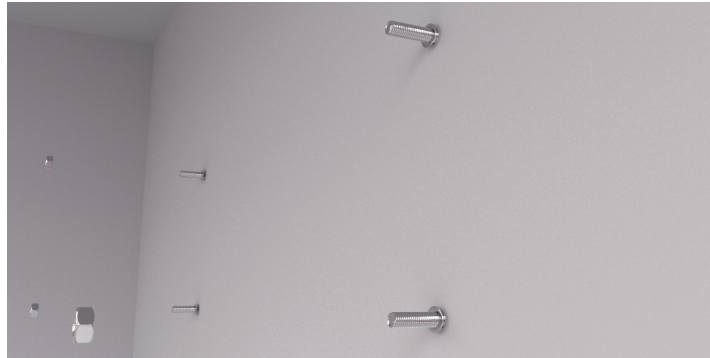
STEP 4

Insert the 4 units of the M6 60mm hex head screws through the groove and fix them exactly in the place desired/planned as seen in the pictures. Make sure it is correctly placed and fixed so it won't fall.



STEP 5

Fix the Mounting Arm Extension Bracket with the light on your tank as seen in the pictures.



And finally...

We suggest to fix the hex head screws with the hex head nut on both two side of the tank. This can help to adjust the space between the tank mounting surface and the tank edge.

DISCLAIMER

Orphek had specifically advised the standard weight that can be hanged by the Orphek Mounting Arm Kit and the compatible thickness of the glass of the aquarium and how to assemble and install this product. (Orphek Universal Mounting Arm Manual at <https://orphek.com/anti-rust-aquarium-light-mounting-arm-kit/>).

Orphek also advised that this is a 4 hands (2 people) job.

Kindly be reminded that Orphek only warrant and is responsible for the product itself and not for the aquarium of clients or corals. Any damages resulting from the installation or use/misuse of the Orphek Mounting Arm or Orphek Mounting Arm Extension is the sole responsibility of the purchaser.

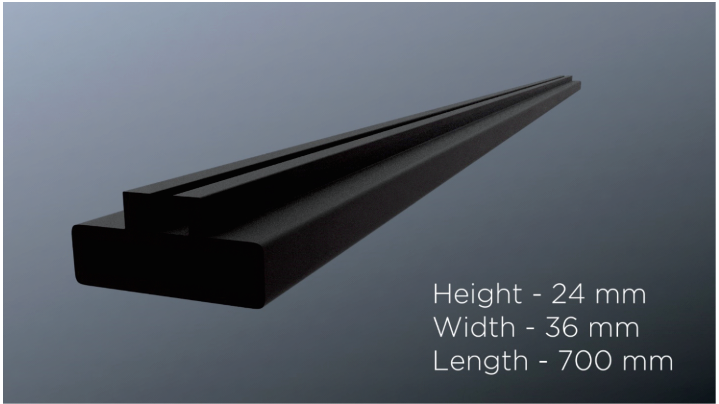
THANK YOU FOR PURCHASING ORPHEK PRODUCTS!

In this manual you are receiving all the information and details of the product and also how to assemble and mount it on your tank.

Please feel free to contact us at any time at: contact@orphek.com

Orphek anti-rust Universal Mounting Arm Kit is designed specifically for the installation and positioning of Orphek Aquarium LED illumination fixtures. It is designed with the brand’s technology, quality and conceptual design. You will find this versatile, anti-rust, heavily-built, multi-functional mounting kit really easy to install! Not only that, it can be also the ultimate gift for your fellow reefers!

You are ready to make it even more versatile now that you have purchased our Orphek Mounting Arm Extension.



FEATURES

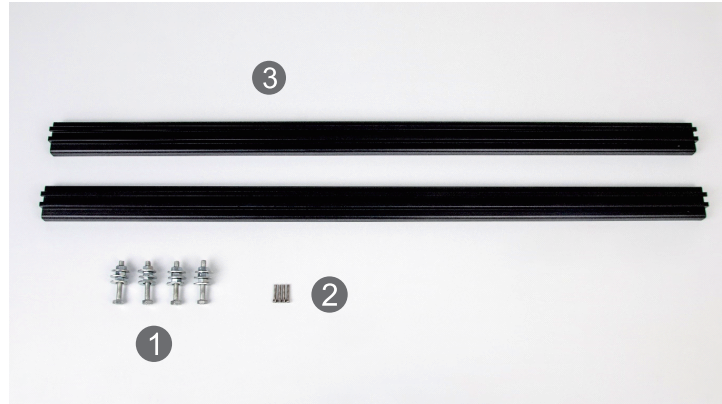
Hight: 24mm (0.9 in)
Width: 36mm (1.4 in)
Length: 700mm (27.55 in)

COMPATIBILITY: Compatible with all Atlantik and Atlantik Compact fixtures and OR LED Bar Lights.

VERSATILITY: As the Orphek Universal Mounting Arm will fit tank

thicknesses from 10 to 20mm (0.393 to 0.787 inches). This Orphek Universal Mounting Arm Kit allows a wide range of horizontal and vertical movement to suit any aquarium application. To mount inside a cabinet or outside layouts.

LAYOUT: Easy to install, mounts directly into the Orphek Universal Mounting Arm.



WHAT’ S IN THE BOX?

- 1 – (4 units) M6 60mm stainless steel hex head screws with metal washer (12units) and hex head nut (12units)
- 2 – (4 units) M3 6mm stainless steel round head screws
- 3 – (2 units) Aluminum alloy mounting arm extension bracket

SO LET’ S GET STARTED!

Before you start to assemble your Orphek Universal Mounting Arm and its Extension check these safety guides:

- If you have all the components
- Read the Orphek Universal Mounting Arm Manual to make sure you will mount it correctly. You will find it at <https://orphek.com/anti-rust-aquarium-light-mounting-arm-kit/>
- if your tank glass thickness is compatible (check the Orphek Universal Mounting Arm Manual).

Before you start to install your light in the Orphek Universal Mounting

Arm and its Extension:

- Disconnect your light from the electricity.
- Decide which is the best layout for your tank and only then choose where to place the brackets.
- Decide the high you wish to set for your Orphek Universal Mounting Arm according to your corals needs.

Before you start to install your Orphek Universal Mounting Arm on your tank:

- Check if all the parts assembled are perfectly placed and screwed, so it won’ t dismantle accidentally.
- Check if you have the skills and physical strength to mount it by yourself or you need a second hand to help you.

Assembly of the Orphek Universal Mounting Arms & Extension

We suggest you follow the order below if you haven’ t installed your Orphek Universal Mounting Arm yet, in that case follow the instructions of the Orphek Universal Mounting Arm Manual at <https://orphek.com/anti-rust-aquarium-light-mounting-arm-kit/>

IMPORTANT: Two people are required to mount the light in the cabinet. Orphek recommends that you follow this requirement to avoid accidents of personal nature or involving your Orphek solution.

1. Assembly of the mounting arm brackets parts and attachment to your light (check the Orphek Universal Mounting Arm Manual how to do it)
2. Attachment of the Orphek Extension for the Mounting Arm (check the steps below how to do it).
3. Connection of both parts together and attachment to the cabinet.

HOW TO ATTACH THE EXTENSION TO YOUR ORPHEK UNIVERSAL MOUNTING ARM

STEP 1

SKIP this step if you are mounting your light for the first time

If your Orphek Universal Mounting Arm was already attached to the glass of your tank you will have to detach it first.

STEP 2 Insert the Orphek Universal Mounting Arm into the Mounting Arm Extension bracket as seen in the pictures.



STEP 3

Use the 4 units of the M3 6mm round head screws to fix the Mounting Extension Bracket on the Orphek Universal Mounting Arm as seen in the pictures. Make sure it is correctly placed and fixed so it won’ t fall.

