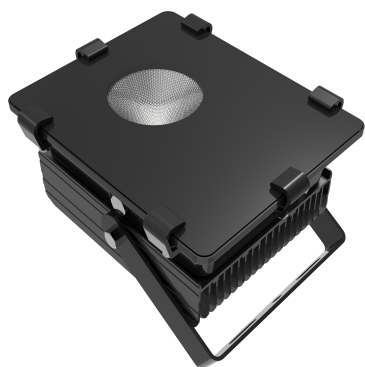
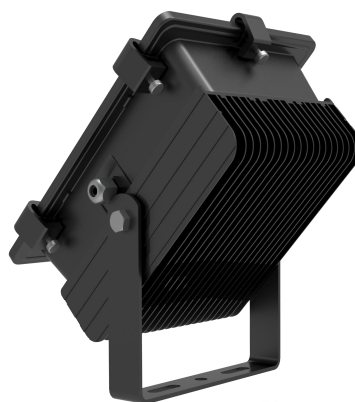


Gear slotting fins provide perfect contact between fins and the conductivity panels to ensure the best heat transfer.

Weather fastness surface treatment provides good anti-corrosion, anti-rust for serious outdoor environment.



IP67 Rating, built-in respirator to adjust temperature difference to prevent from glass atomization.

Specifications

Electrical

MeanWell driver: 1xELG-100-36A

Input Voltage: 100-240VAC

227VAC for North America only

Frequency: 47-63Hz

Power Consumption: \sim 80 watts

PF (Power Factor) 0.9920

Input Current (Amps) 0.3150

Input Voltage (V) 220

Output Voltage (V) 36

Electrical outlet: Region appropriate

Cords

Power extension cord with waterproof connector from light unit to power

box: Total 118" (3m)

Power Cord: 59" (1.5m)

Dimensions

Length: 9.88" (251mm)

Height: 4.6" (117mm)

Color/Materials

Light Unit Body Material:

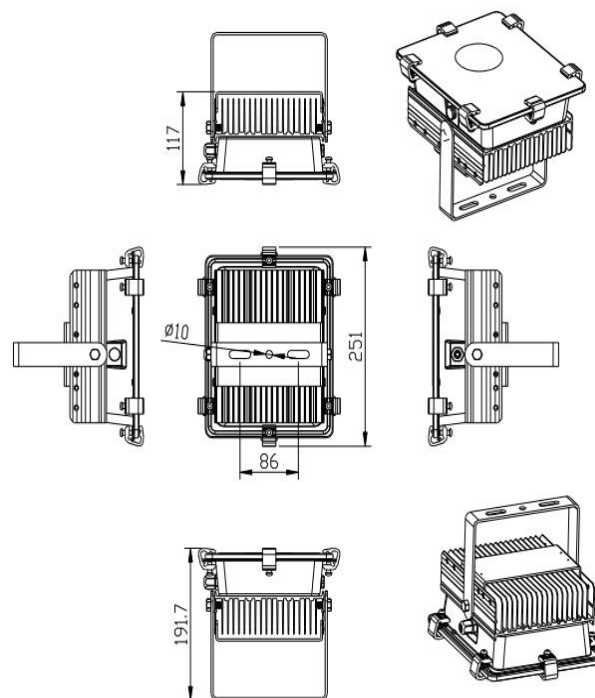
Black high quality Aluminum housing
with Tempered Glass Cover.

Weight

Light Unit Weight: 5.5 lbs (2.5kg)

Power Supply Weight: 4.4 lbs (2kg)

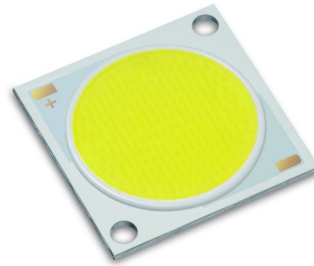
Dimensions



Light Source

Features

- Mechanical Dimensions: 28.0x28.0x1.4(mm)
- Package Structure: Copper Base Chip on Board
- CRI(Ra): 90Min.
- Thermal Resistance: 0.32C/W
- RoHS compliant
- Better die arrangement for optics
- Wide range of luminous flux and high efficacy



LEDs

1pcs 80 watts COB LEDs

LEDs Make Up

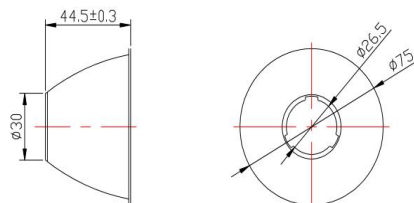
Matrix chip containing 80pcs of 3 watt LEDs.

LED make up will depend on Kelvin temperature used.

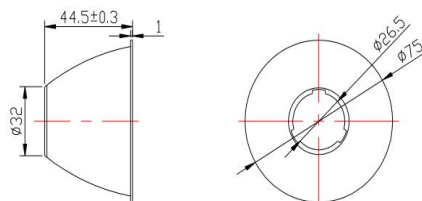
Lens Options

Aluminum Reflection Cup: 15/30/60 degree

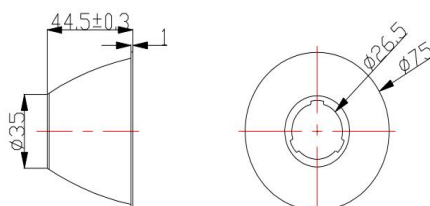
15degree



30degree



60degree



Package Dimensions / Weight

Length: 11.8" (300mm)

Width: 10.0" (255mm)

Height: 7.5" (190mm)

Package Weight: 13.2 lbs (6kg)

Package V.W.: 6.6 lbs (3kg)

